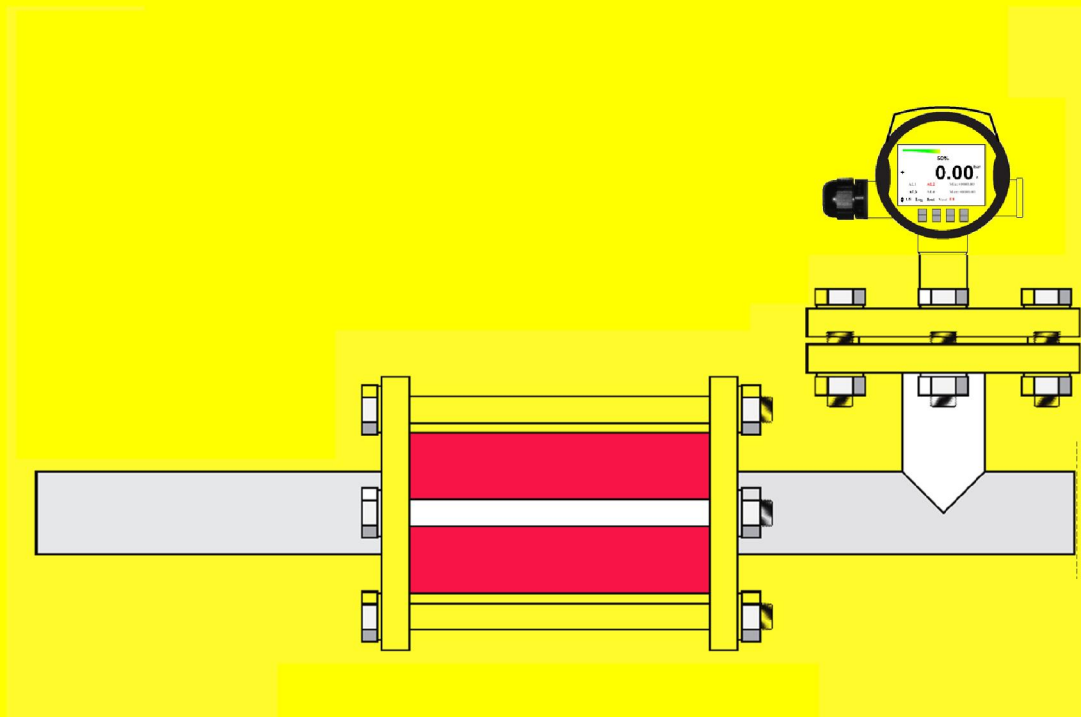


Smart Temperature Transmitter

MODEL: SB-TT

SMART BIENE.



Smart Biene Inc., 250 East Main Street, Stuttgart, Germany.
Email: info@smartbiene.com

Document ID: SB-TT (0101)





SOFTWARE

SB-TT (01) is Portable device software; you can connect your device to computer with USB Cable (USB to Micro-USB) and configure your device or see measured value plots, save data...

Min System Requirement:

- CPU: 2GHz.
- Memory: 2GB RAM.
- Hard Drive: 80 MB available in the hard disk.
- Windows 8 or superior.
- USB2 Port.

Software consists of three tabs:

- **DATA (Real Time):** Display measured value with a real time graph. Start, pause and erase data logging. Saving text file or a plot image from logged data. Display alarms status, errors, main and max values of measured value.
- **Configuration:** In this tab you can get device configuration or change configuration and set them to device, also you can reset device using reset factory.
- **Info:** In info tab you can change Tag ID of device. You can see device serial number registered by **Smart Biene**.



Figure 12 Device software- DATA (Real Time) Tab



Figure 13 Device software- info Tab

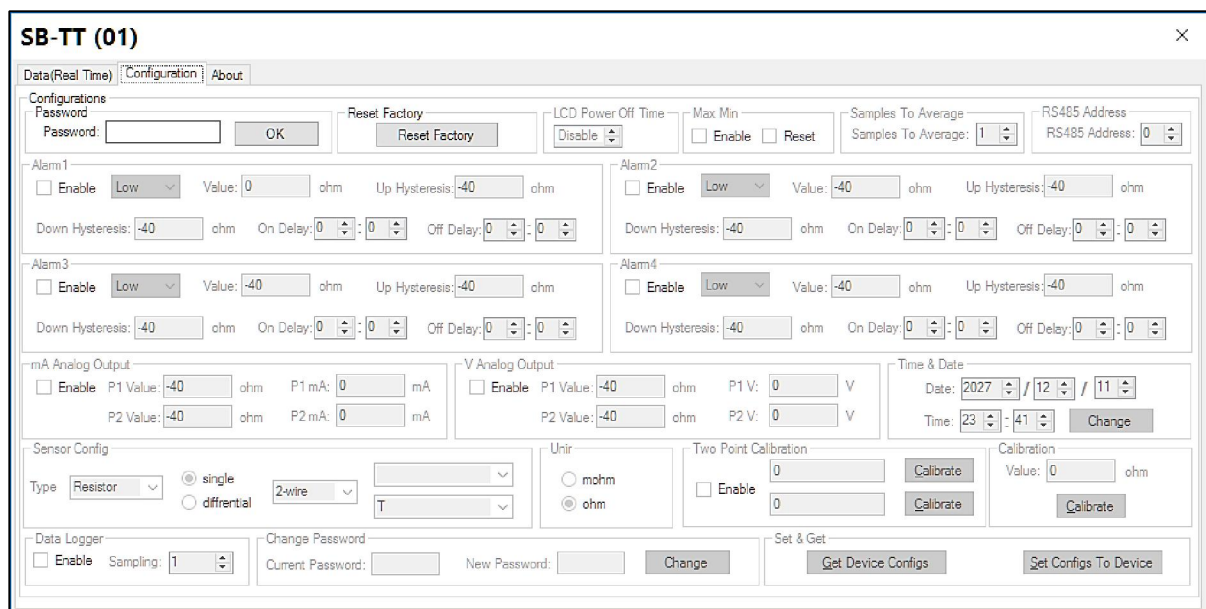


Figure 14 Device software- Configuration Tab

WWW.SMARTBIENE.COM

Smart Measurement.

All specifications are subject to change without notice.
All sales subject to standard terms and conditions.
© Smart Biene Inc. 2012/09/15

Smart Biene Inc., 250 East Main Street, Stuttgart,
Germany.
Email: info@smartbiene.com